



## Chapter 2: Getting Started with DB2 UDB

IBM DB2 Universal Database V8.1

Database Administration Certification Preparation Course

Maintained by Clara Liu

# Objectives

---

- In this section, we will cover:
  - ▶ DB2 UDB Family Products
  - ▶ DB2 UDB V8 Installation
  - ▶ DB2 UDB Instances
  - ▶ DB2 UDB Environment
  - ▶ DB2 UDB Tools

## Chapter 2: Getting Started with DB2 UDB

### **DB2 UDB Family Products**

DB2 UDB V8 Installation

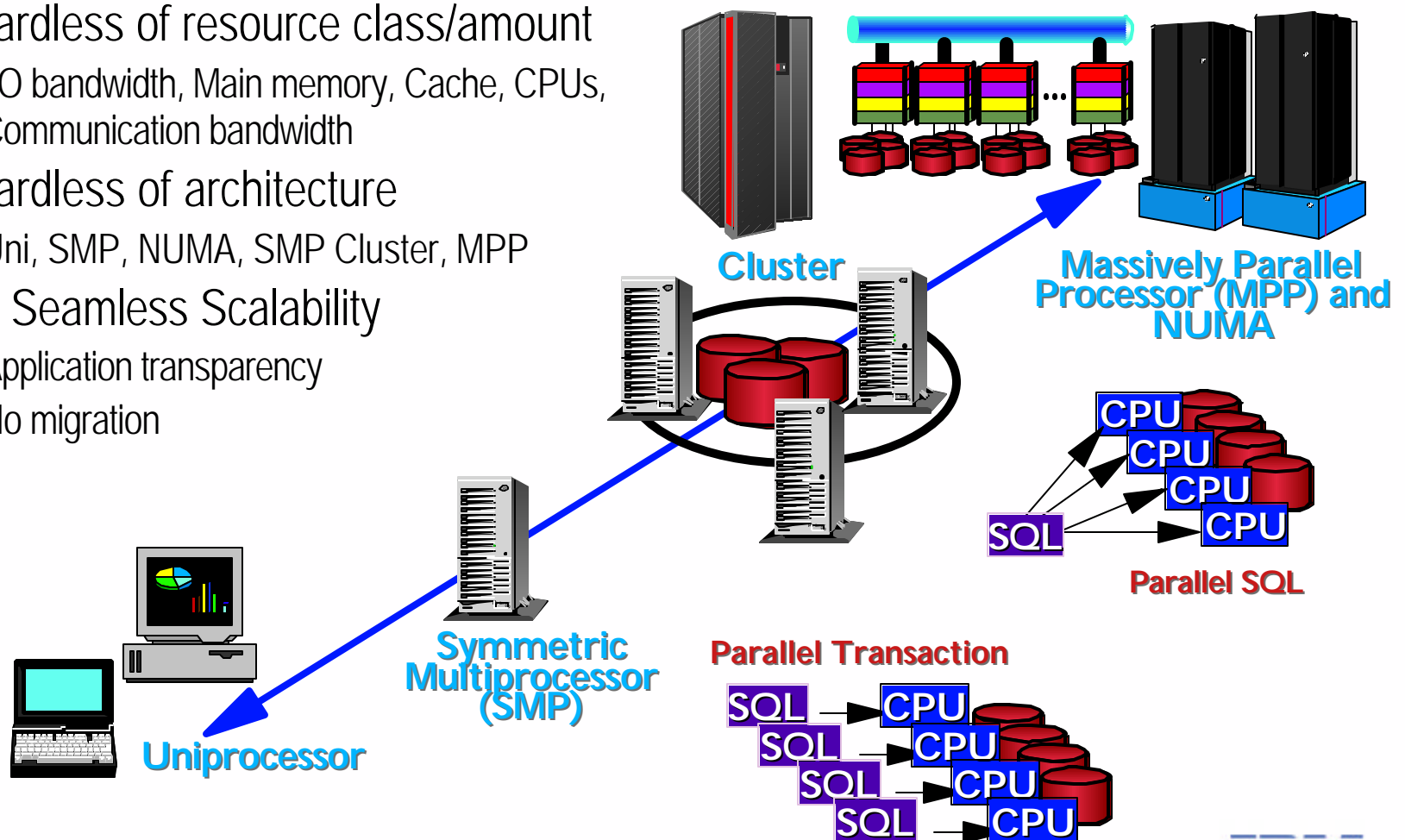
DB2 UDB Instances

DB2 UDB Environment

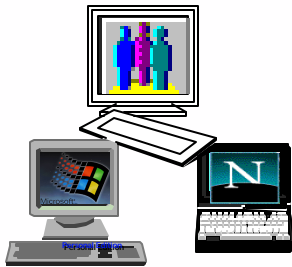
DB2 UDB Tools

# Theme: Fully Exploit All Resources

- Full exploitation of ALL available resources
  - ▶ Within a single query
  - ▶ Across separate queries
- Regardless of resource class/amount
  - ▶ I/O bandwidth, Main memory, Cache, CPUs, Communication bandwidth
- Regardless of architecture
  - ▶ Uni, SMP, NUMA, SMP Cluster, MPP
- With Seamless Scalability
  - ▶ Application transparency
  - ▶ No migration



# DB2 Family Platform Support



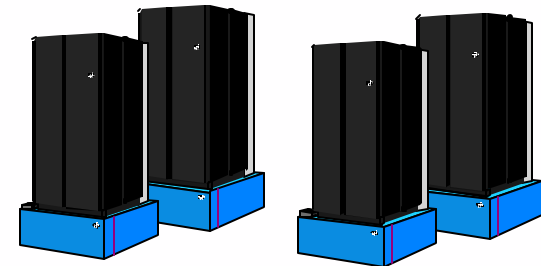
## Personal

- Windows
- Linux



## Workgroup

- AIX
- HP-UX
- Solaris
- Windows
- Linux



## Enterprise Server Edition

- AIX
- HP-UX
- Solaris
- Windows
- Linux



## Hosts

- DB2 iSeries
- DB2 zSeries
- DB2 VM/VSE



## DB2 Connect

- AIX
- Solaris
- HP-UX
- Windows
- Linux



## Everyplace

- Pocket PC
- Linux
- PalmOS
- QNX Neutrino
- Symbian EPOC

# DB2 Universal Database

---

- DB2 Everyplace
  - ▶ Small footprint database engine on handheld devices ( ~ 150 KB)
  - ▶ A synchronization server to replicate data in both directions
  - ▶ Application development tool to build handheld apps with drag-and-drop ease
  
- DB2 Personal Edition (PE)
  - ▶ A fully functional database for workstations
  - ▶ Also a DB2 Satellite Client (can be remotely managed)
  - ▶ Possible to access remote DB2 servers as a client
  - ▶ Cannot act as database server for remote clients
  - ▶ Spatial Extender (single user)
  - ▶ Audio, Image, and Video Extenders
  
- DB2 Workgroup Server Edition (WSE)
  - ▶ Per User Licensing
  - ▶ Net Search Extender ( 5 user limit )
  - ▶ Spatial Extender ( 5 user limit )
  - ▶ Ideal for low user departmental machines using up to 4 CPUs

# DB2 Universal Database

---

- DB2 Workgroup Server Unlimited Edition (WSUE)
  - ▶ Per Processor Licensing
  - ▶ Ideal for high user or web use
  - ▶ Up to 4 CPUs
  - ▶ Audio, Image, and Video Extenders
  - ▶ Net Search and Spatial Extenders are optional
- DB2 UDB Enterprise Edition (ESE)
  - ▶ Per Processor Licensing
  - ▶ Ideal for enterprise environments
    - CRM, ERP, SCM, Data Warehouses
  - ▶ Includes Host Database Connectivity (DB2 Connect)
  - ▶ Informix Integration
  - ▶ Audio, Image, and Video Extenders
  - ▶ Options Available:
    - Database Partitioning Feature (DPF)
    - Net Search Extender, Spatial Extender, Data Links Manager
    - Warehouse Manager
    - Intelligent Miner Scoring, Intelligent Miner Modeling, Intelligent Miner Visualization

# DB2 Host Databases

---

- DB2 for iSeries
  - ▶ <http://www-1.ibm.com/servers/eserver/series/db2/>
- DB2 for zSeries
  - ▶ <http://www-3.ibm.com/software/data/db2/os390/>
- DB2 for VSE & VM
  - ▶ <http://www-3.ibm.com/software/data/db2/vse-vm/>

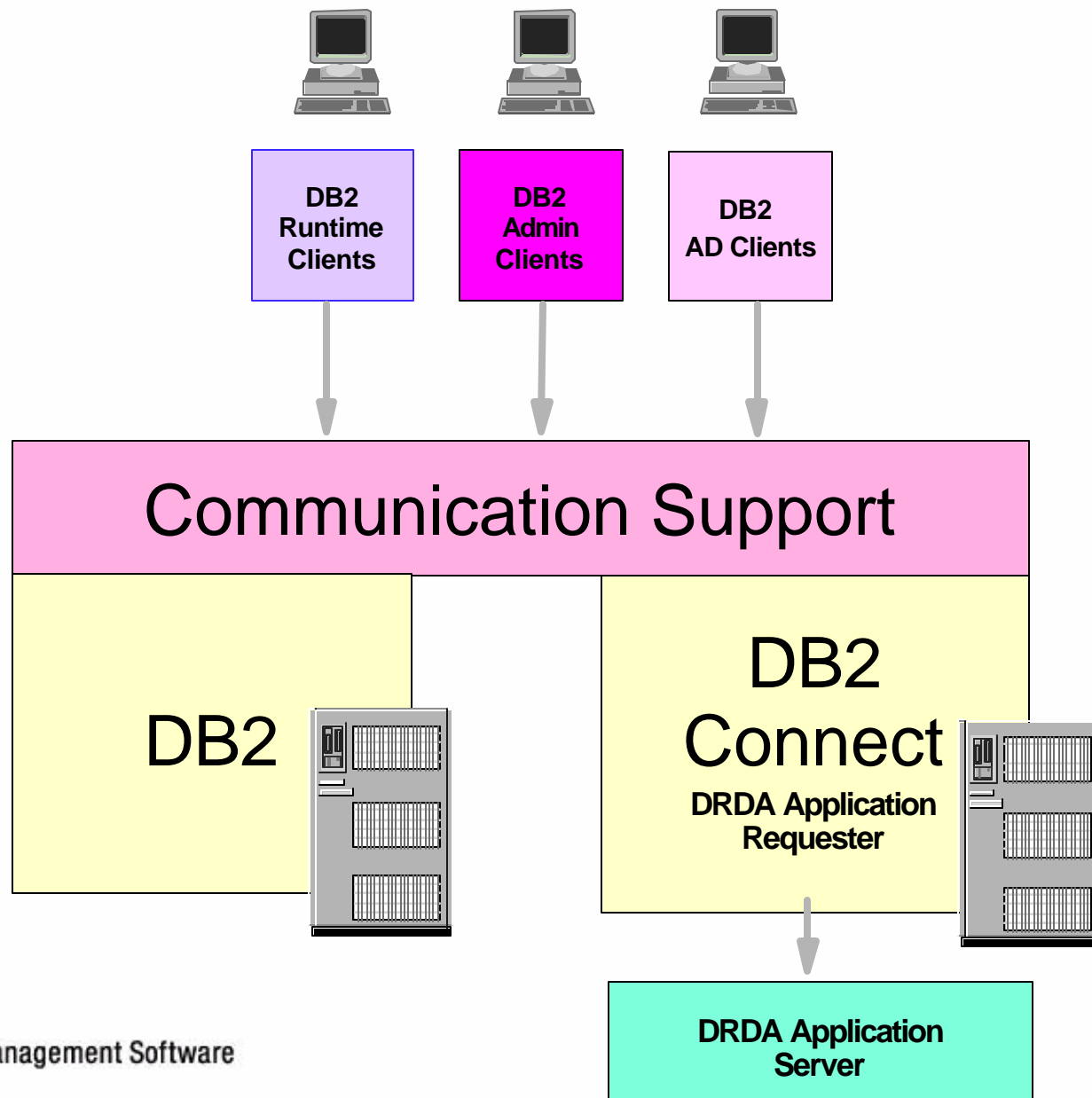


# DB2 Clients

---

- Runtime Client
  - ▶ Runtime code to access DB2 servers
- Administration Client
  - ▶ Includes runtime client
  - ▶ Provides tools to administer DB2 servers
- Application Development Client
  - ▶ Includes runtime client
  - ▶ Provides tools and libraries to develop applications that access DB2 servers

# Overview of DB2 Componets



# DB2 Connect

---

## ■ DB2 Connect Personal Edition

- ▶ Provides PC-based desktops transparent access to DB2 host databases or DRDA-compliant database server (single user)
- ▶ Package also includes AD client, Administration client, and Runtime client
- ▶ Platforms: Linux, Windows NT/98/2000/ME

## ■ DB2 Connect Enterprise Edition

- ▶ Act like a gateway that allows LAN-based systems and their desktop applications to access DB2 host databases or DRDA-compliant database server (multi users)
- ▶ Includes web-enabling functions such that Internet or intranet users can also pass through the gateway to access the host database.
- ▶ Package also includes AD client, Administration client, and Runtime client
- ▶ Platforms: Windows NT/2000, AIX, HP-UX, Solaris, Linux, Linux/390

# DB2 Developer's Edition

---

## ■ DB2 Personal Developer's Edition

- ▶ A single user database engine
- ▶ Enables a developer to design and build single user desktop applications
- ▶ Package includes:
  - DB2 Personal Edition
  - DB2 Connect Personal Edition
  - Application Development Client
  - DB2 Net Search Extender, Spatial Extender, AIV Extenders
- ▶ Platforms: Linux, Windows NT/2000/XP

## ■ DB2 Universal Developer's Edition

- ▶ Offers a low cost package for a single application developer to design, build, and prototype applications for deployment on any of the DB2 client or server platforms
- ▶ Package includes all client and server DB2 editions: DB2 Connect, DB2 Extenders, Warehouse Manager, and Intelligent Miner
- ▶ Software in this package cannot be used for production systems
- ▶ Platforms: AIX, HP-UX, Linux, Solaris, Windows NT/2000/XP

# Data Warehouse and OLAP concepts

---

## ■ DB2 Warehouse Manager

- ▶ Performs SQL-based extract, transform, and load (ETL) capabilities to move and transform data
- ▶ Provides distributed agents to transfer data directly between sources and targets, and a metadata management solution

## ■ DB2 OLAP Server

- ▶ Delivers analytic applications for fast, intuitive multidimensional analysis, allowing users to ask questions in an intuitive business language
- ▶ Processes multidimensional requests that calculate, consolidate, and retrieve information from a multidimensional database, a relational database, or both.
- ▶ Offers exhaustive, machine-driven, algorithm-based, data mining to discover unexpected values

# Other DB2 Products

---

## ■ Relational Connect

- ▶ Part of IBM Information Integrator
- ▶ Allows access to non-DB2 data sources, e.g. Oracle, Sybase, MS SQL Server, ODBC data sources
- ▶ Supports advanced SQL and data type support
- ▶ Advanced optimization and global catalog
- ▶ Distributed queries including distributed join
- ▶ Pass-through option

## ■ DB2 Extenders

- ▶ DB2 AIV Extenders
  - Audio, Image and Video data searching with traditional business data
- ▶ DB2 Spatial Extender
  - Gathering and analyzing spatial data and traditional business data
- ▶ DB2 Net Search Extender
  - High speed full-text searching with a large number of concurrent users
- ▶ DB2 XML Extender
  - Leveraging the power of XML in e-business applications

## Chapter 2: Getting Started with DB2 UDB

DB2 UDB Family Products

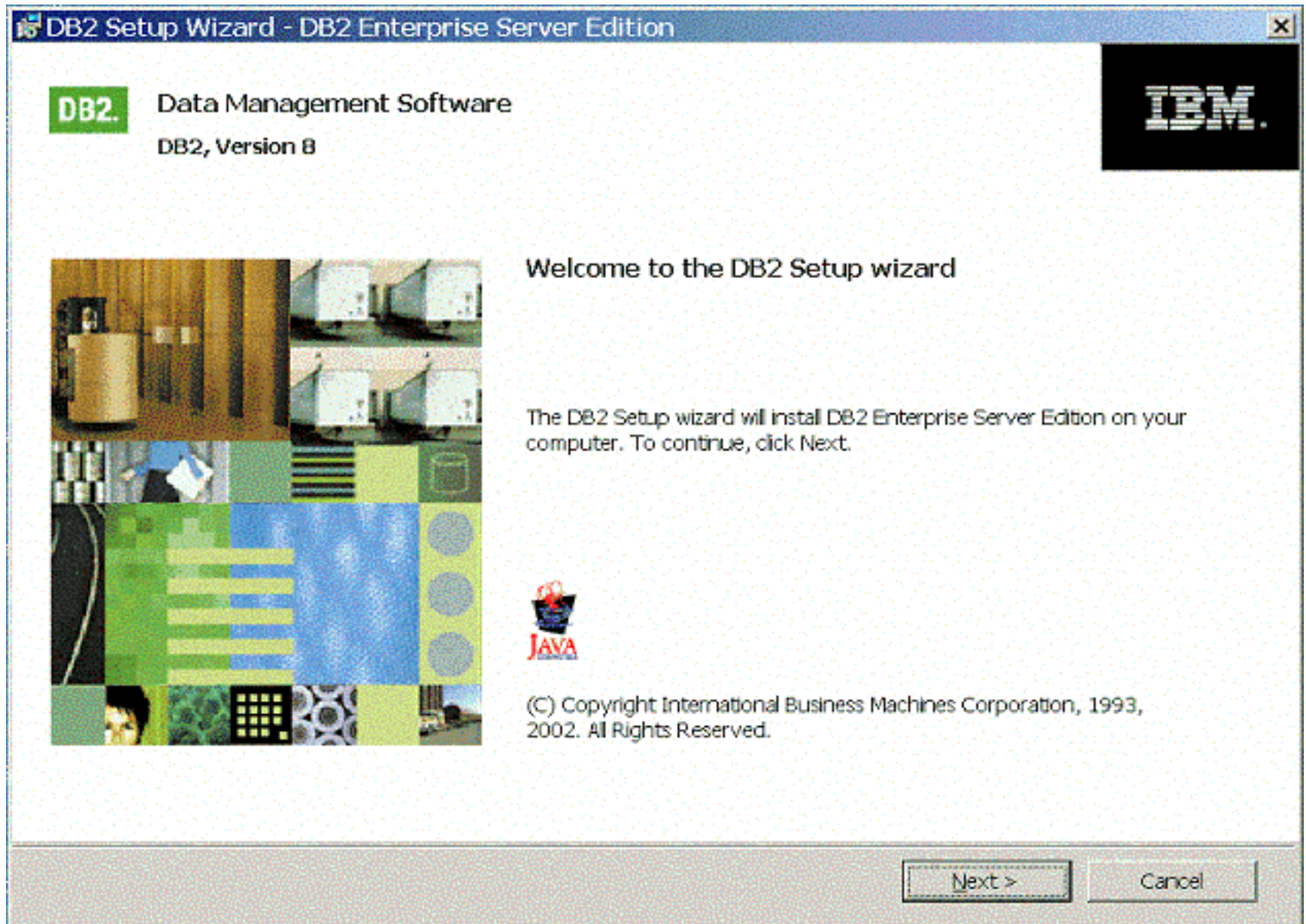
**DB2 UDB V8 Installation**

DB2 UDB Instances

DB2 UDB Tools

DB2 UDB Environment

# Install for Windows and UNIX (common)





# Installation Type

DB2 Setup Wizard - DB2 Enterprise Server Edition

Select the installation type

**Typical:**                      Approximately 350 - 560 MB

DB2 will be installed with most features and functionality, using a typical configuration with default values. To add functionality, select the desired functions from the following list.

Additional functions

Data warehousing

Satellite administration capability

**Compact:**                      Approximately 260 - 400 MB

Basic DB2 features and functionality will be installed, and minimal configuration will be performed.

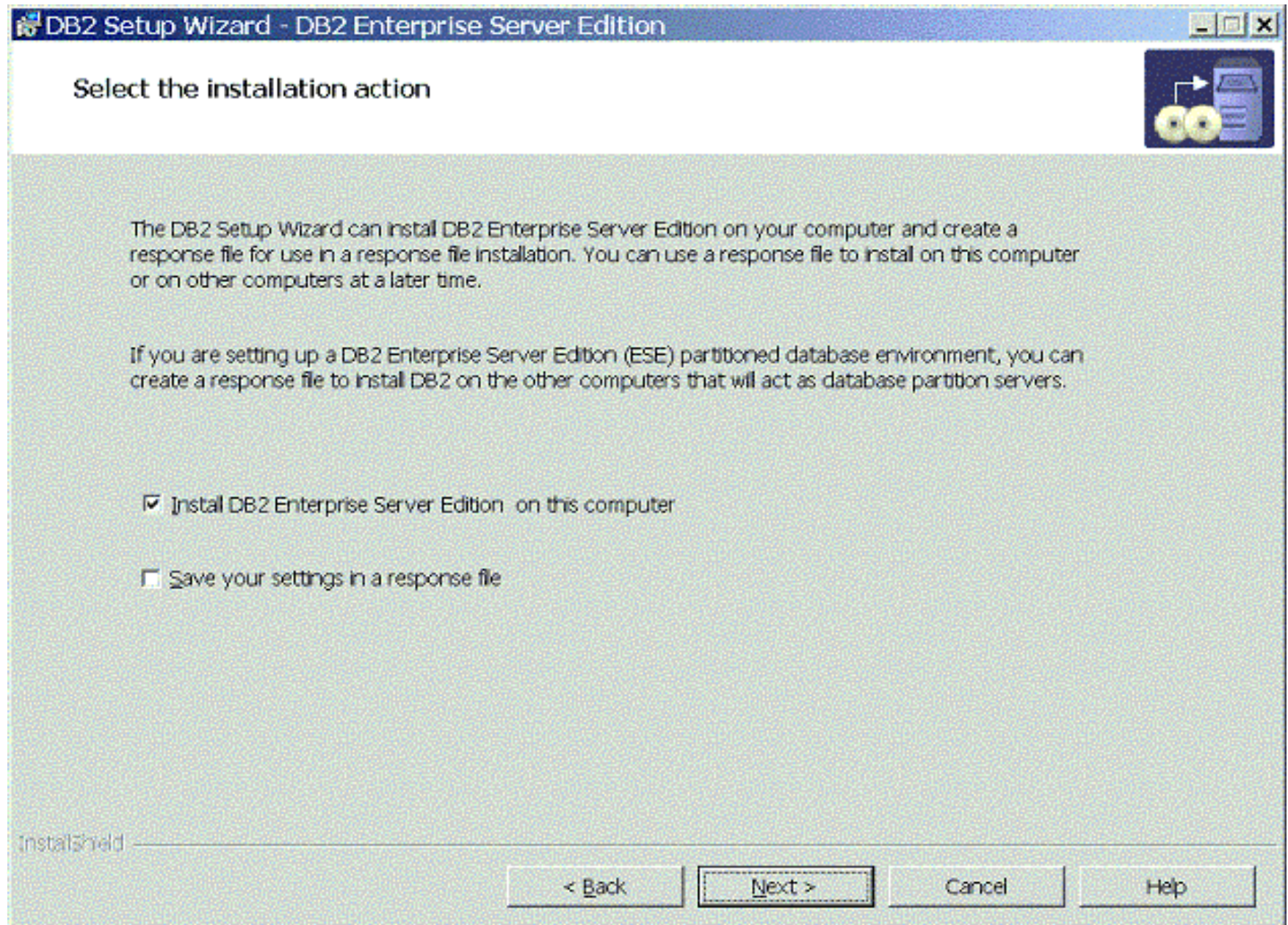
**Custom:**                      Approximately 260 - 600 MB

Select the features that you want installed, and specify configuration options for DB2. This option requires knowledge of DB2 features and settings.

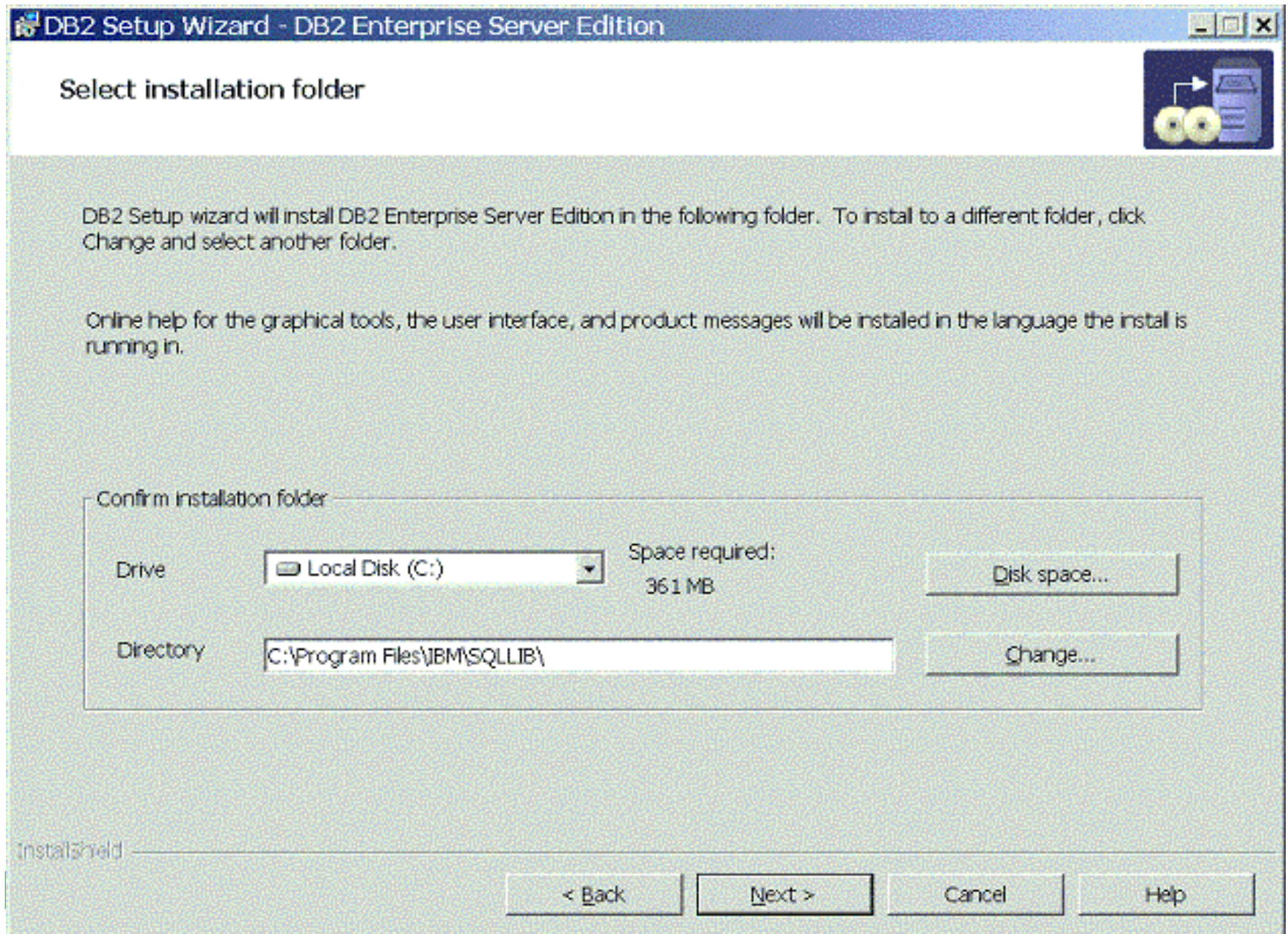
InstallationShield

< Back    Next >    Cancel    Help

# Installation / Response File



# Install Path



# Userid for DB2 Admin Server

DB2 Setup Wizard - DB2 Enterprise Server Edition

Set user information for the DB2 Administration Server

Enter the user name and password that the DB2 Administration Server (DAS) will use to log on to your system. You can use a local user or a domain user.

User information

Domain	<input type="text"/>
User name	<input type="text" value="db2admin"/>
Password	<input type="password" value="XXXXXXXXXX"/>
Confirm password	<input type="password" value="XXXXXXXXXX"/>

Use the same user name and password for the remaining DB2 services

InstalShield

< Back    Next >    Cancel    Help

# Contact List & Notification

DB2 Setup Wizard - DB2 Enterprise Server Edition

## Set up the administration contact list

The Administration contact list will store contact information used to notify administrators that a database requires attention. Specify whether you want to create a local contact list or use an existing global contact list that resides on a remote DB2 server.

Administration contact list location

Local - Create a contact list on this system

Remote - Use an existing contact list that resides on a remote DB2 server

Remote DB2 server host name

Notification SMTP server

Type the SMTP server that will send email and pager notification to your administration contact.

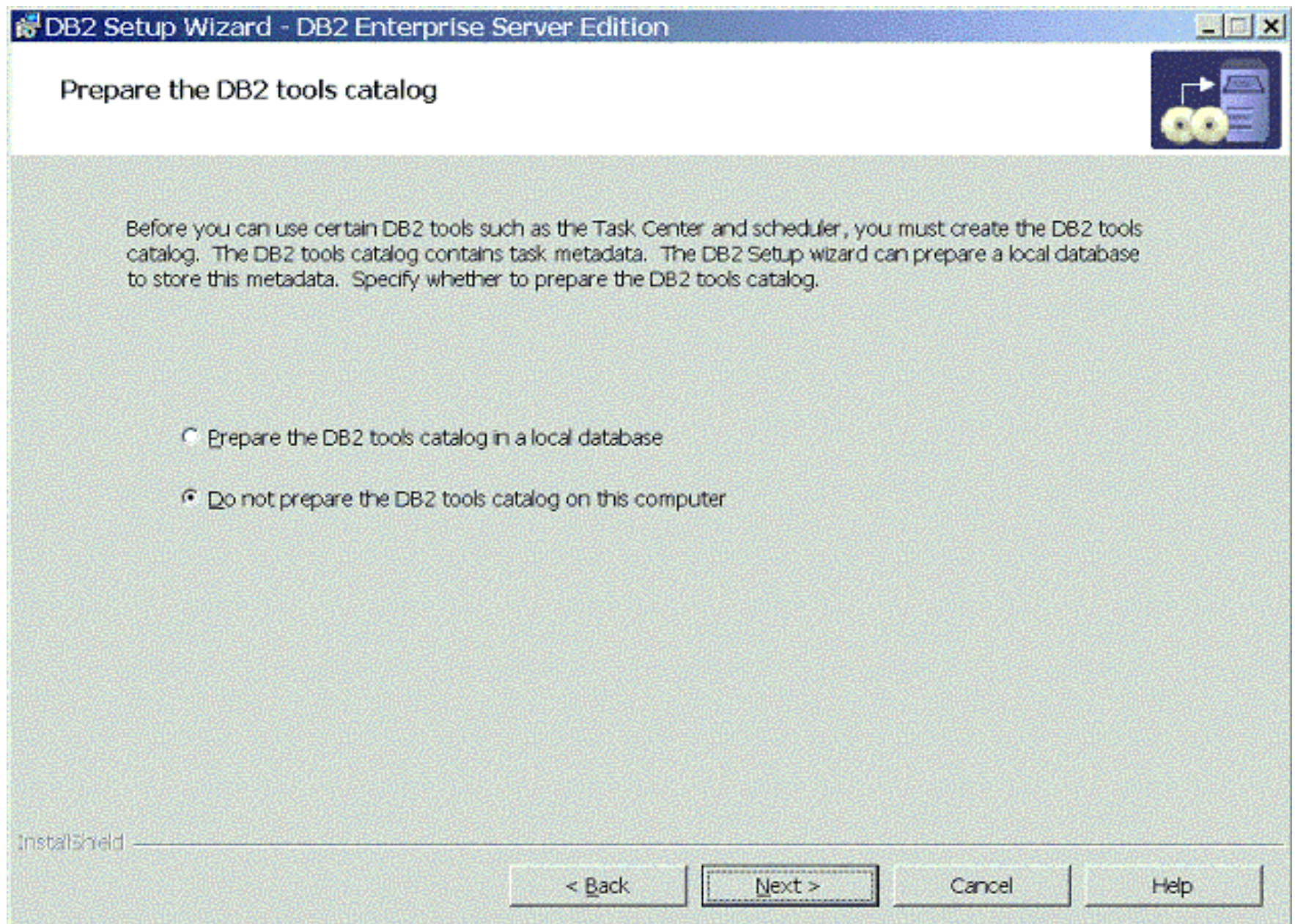
Enable notification

Notification SMTP server

InstalShield

< Back   Next >   Cancel   Help

# DB2 Tools Catalog



# Health Monitor Contact

DB2 Setup Wizard - DB2 Enterprise Server Edition

## Specify a contact for health monitor notification

By default, a health monitor runs on the DB2 instance you are setting up. When a health indicator threshold is breached, email or pager notification will be sent to an administration contact. Specify a new or existing contact for health monitor notification. If your contact list resides on a remote DB2 server, you must provide a user name and password for logon.

Administration contact for this instance

New contact

Name

Email address

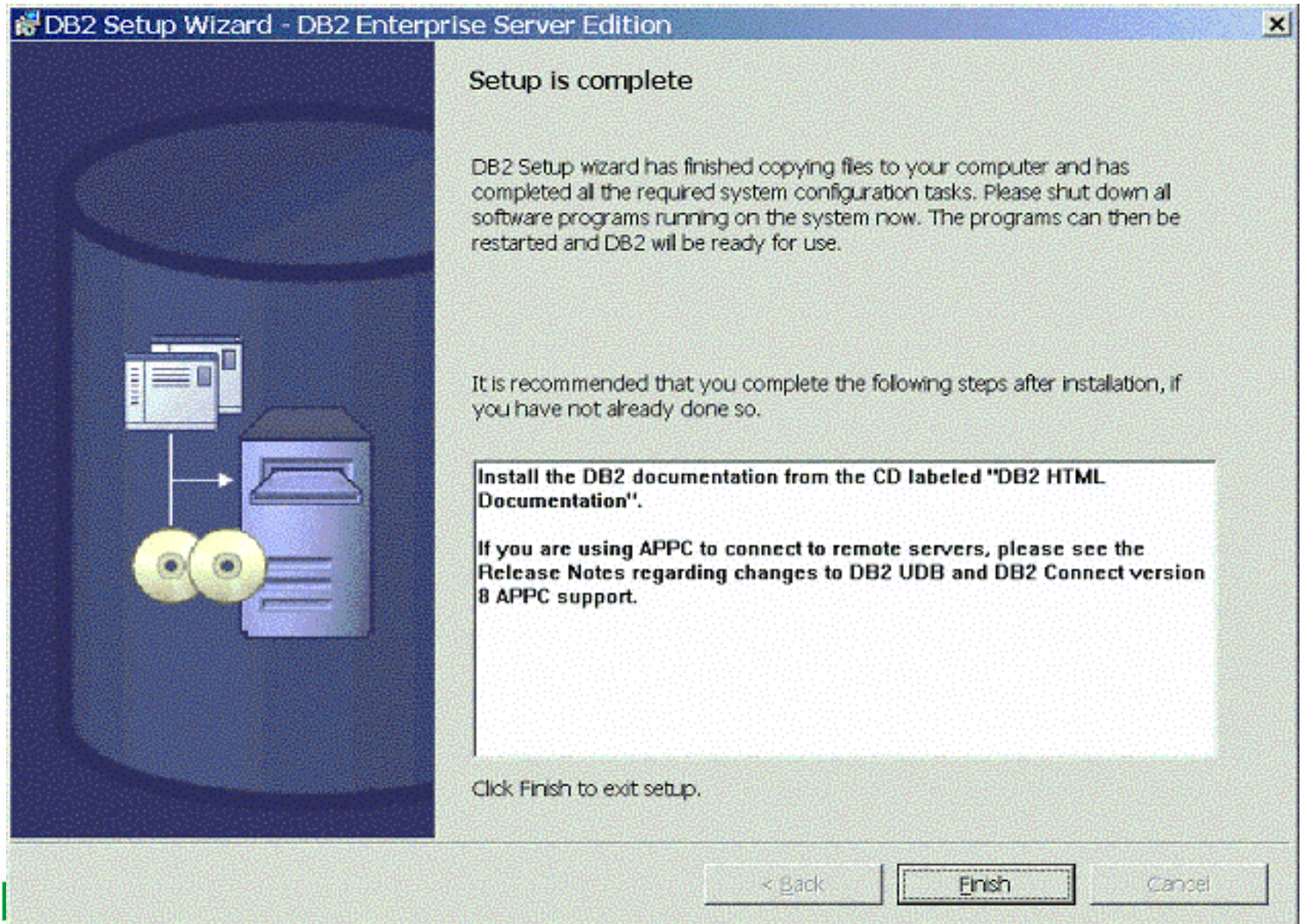
Address is for a pager

Defer the task until after installation is complete

InstallShield

< Back Next > Cancel Help

# Setup Completion Summary





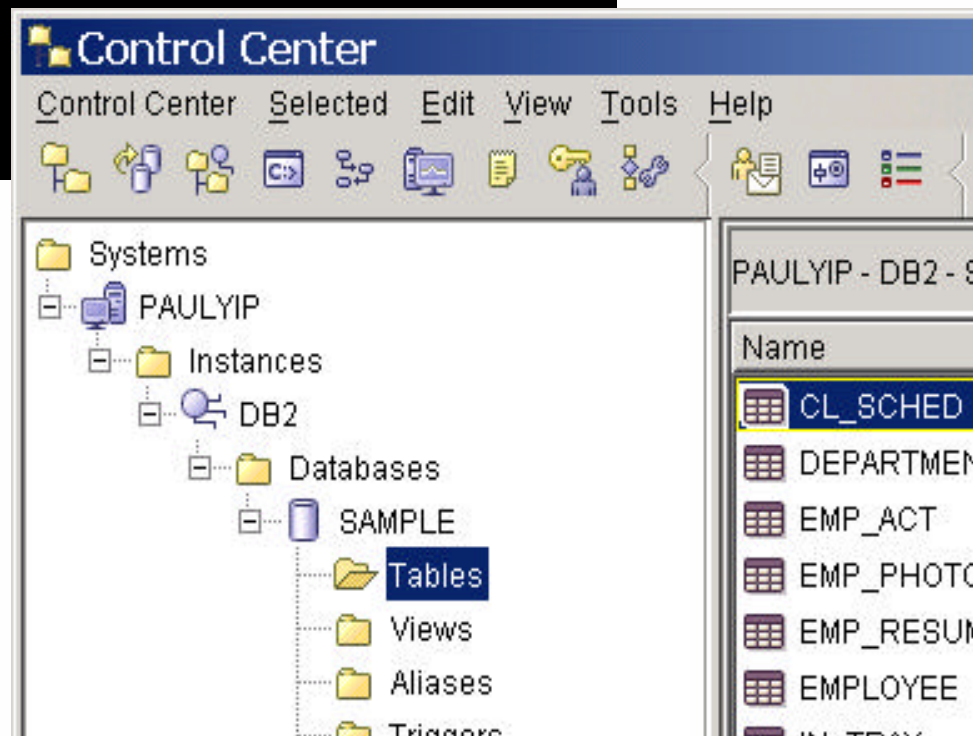
# Getting Started : SAMPLE database (db2samp1)

```
DB2 CLP
C:\>db2samp1
C:\>db2 connect to sample

Database Connection Information

Database server          = DB2/NT 8.1.0
SQL authorization ID    = ADMINIST...
Local database alias    = SAMPLE

C:\>
```



# DB2 64-bit Support

- Can mix 32-bit clients with 64-bit server and vice versa
- Exploit much larger memory for improved performance

64 Bit Product	AIX PPC	Sun	HP	AIX IA64	Linux IA64	Windows IA64
Personal Edition	N/A	N/A	N/A	N/A	yes	yes
Workgroup Edition EE / EEE	no yes	no yes	no yes	no yes	no yes	no yes
Connect Personal	N/A	N/A	N/A	N/A	yes	yes
Connect Enterprise	yes	yes	yes	yes	yes	yes
App. Dev. Client	yes	yes	yes	yes	yes	yes
Administration Client	yes	yes	yes	yes	yes	yes
Runtime Client	yes	yes	yes	yes	yes	yes
Relational Connect	yes	yes	yes	yes	yes	yes
Satellite Edition	no	no	no	no	no	no
Datalinks Manager	no	no	no	no	no	no
Spatial Extender	no	no	no	no	no	no
Warehouse Manager	yes	yes	yes	yes	yes	yes

## Chapter 2: Getting Started with DB2 UDB

DB2 UDB Family Products

DB2 UDB V8 Installation

**DB2 UDB Instances**

DB2 UDB Environment

DB2 UDB Tools

# DB2 Instances

---

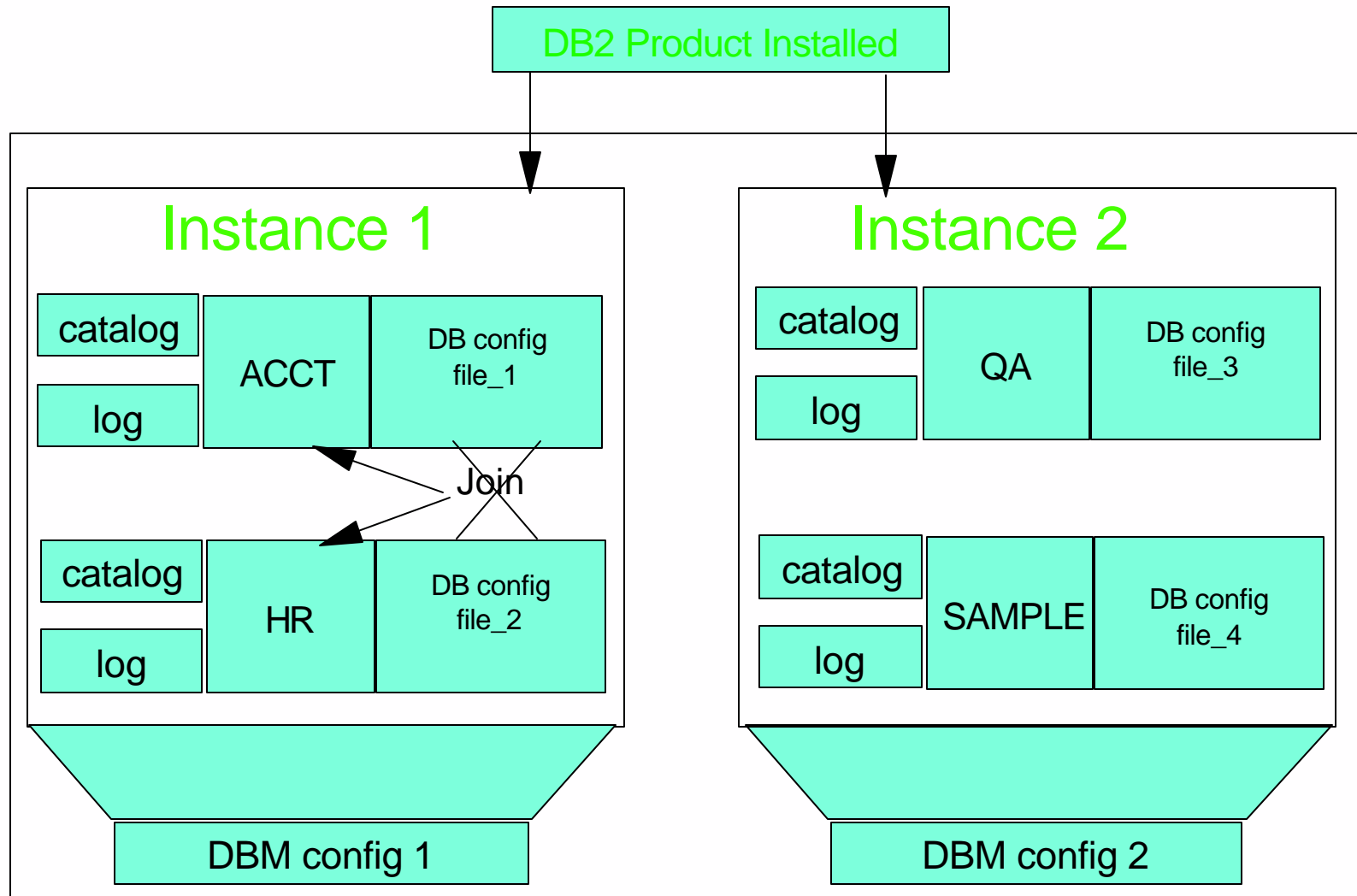
- A DB2 instance is a logical context in which DB2 commands and functions are executed
- An instance manages access to database files
- More than one instance can be defined on a server machine
- Each instance is independent of the others
- An instance is created on install by default
  - ▶ db2inst1 (UNIX)
  - ▶ DB2 (Windows)
- To start an instance
  - ▶ db2start
  - ▶ Starts a remote instance
    - db2start REMOTE <instance name>
  - ▶ Start the instance in quiesced mode for administration purposes
    - db2start ADMIN MODE
- Terminate all database connections and stop an instance
  - ▶ db2stop force

# Managing DB2 Instances

---

- To create additional instances
  - ▶ `db2icrt -u <fenced user ID> <instance name>`
    - must specify fenced user ID for UNIX platforms
  - ▶ `db2icrt <instance name>`
    - for Windows platforms
- Terminate all database connections and drop an instance
  - ▶ `db2idrop -f <instance name>`
- To list existing instances defined in a server
  - ▶ `db2ilist`
- To update a DB2 instance for access to functions associated with installation or removal of certain product options or fix patches
  - ▶ `db2iupdt <instance name>`
- To migrates an existing instance, for UNIX platforms only
  - ▶ `db2imigr <instance name>`
- To create, drop, update, or migrate an instance, root or administrative access is required

# DB2 Instances and Databases



## Chapter 2: Getting Started with DB2 UDB

DB2 UDB Family Products

DB2 UDB V8 Installation

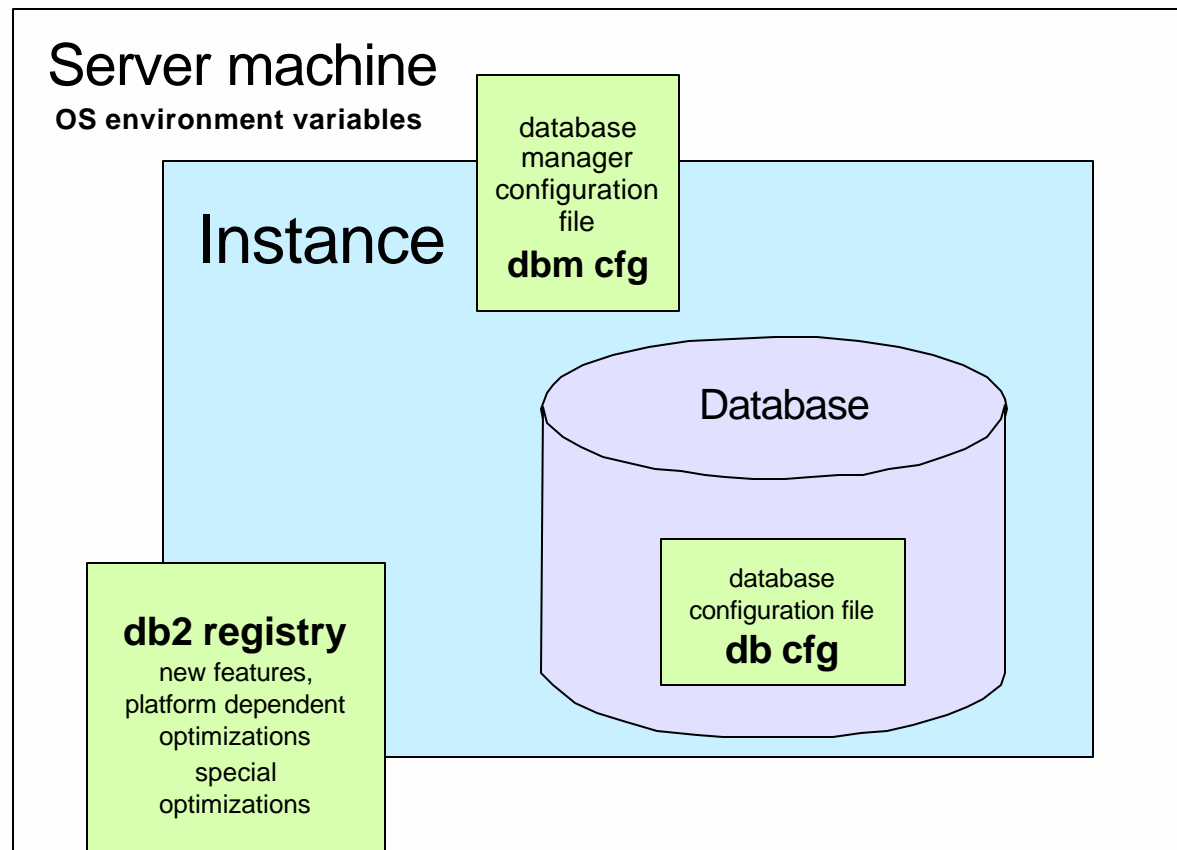
DB2 UDB Instances

**DB2 UDB Environment**

DB2 UDB Tools

# DB2 Environment

- Configure the DB2 environment via:
  - ▶ DB2 registry variables
  - ▶ Operating System environment variables
  - ▶ DB2 database manager configuration parameters
  - ▶ DB2 database configuration parameters





# DB2 Profile Registry

---

- Most of the DB2 environment is controlled by entries stored in the DB2 Profile Registry
- Objective is to centralize control of DB2 environment
- No need to reboot the system after making changes to DB2 Registry
- At its various level, controls many aspects of the DB2 UDB environment
  - ▶ DB2 Instance-Level Profile Registry
  - ▶ DB2 Global-Level Profile Registry
  - ▶ DB2 Instance-Node-Level Profile Registry
  - ▶ DB2 Instance Profile Registry

# DB2 Profile Registry

---

- To list all DB2 registry variables currently set
  - ▶ `db2set -all`
- To display global registry variables
  - ▶ `db2set -g`
- To display instance registry variables
  - ▶ `db2set -i <instname>`
- To list all supported registry variables
  - ▶ `db2set -lr`
- To set a DB2 registry variable
  - ▶ `db2set <parm>=<value>`
  - ▶ e.g. `db2set DB2COMM=TCPIP`
- Must restart the instance for new changes to be in effect
- DB2 Configuration Assistant (db2ca) can also be used to manage DB2 registry variables

# Display DB2 Registry Variable with DB2 CA

Select the value field of a parameter to change its value.

Keyword	Value	Pending Value
<b>Global</b>		
DB2_GRP_LOOKUP	LOCAL	
DB2ADMINSERVER	DB2DAS00	
DB2INSTDEF	DB2	
DB2PATH	C:\SQLLIB	
DB2SYSTEM	CLARALIU	
<b>Instance</b>		
DB2_GRP_LOOKUP	LOCAL	
DB2ACCOUNTNAME	CLARALIU\db2a...	
DB2COMM	TCPIP	
DB2INSTOWNER	CLARALIU	
DB2INSTPROF	C:\SQLLIB	
DB2PORTRANGE	60000:60003	

11 of 11 items displayed

Default ... View

OK Cancel Help

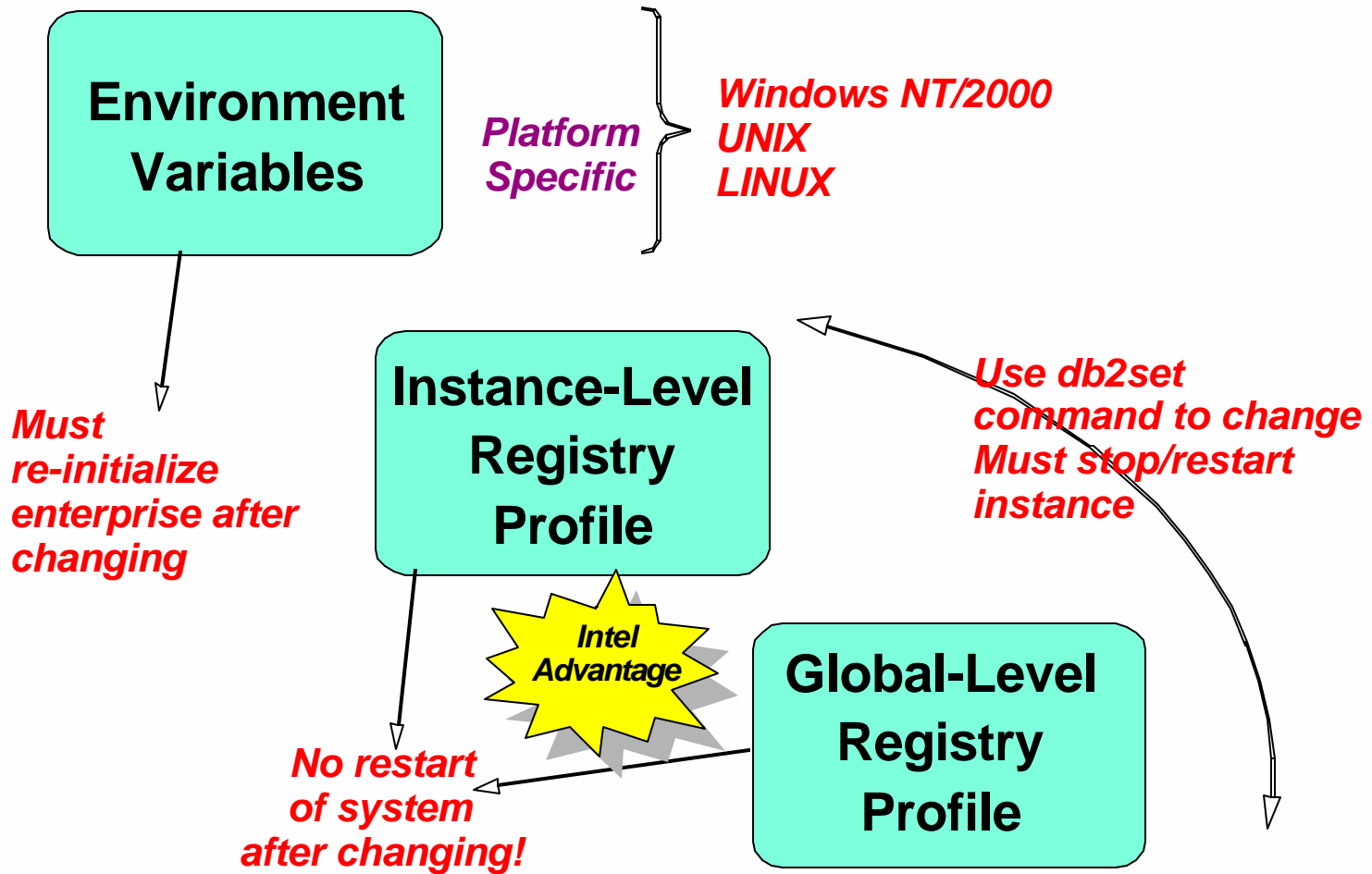
# OS environment variables

---

- Most environment variables are controlled by the DB2 Profile Registry - those not stored in the DB2 Profile Registry can be referred to as system environment variables, and are set in a location where the platform stores its system variables:
  - ▶ Windows- Control Panel -> System -> Environment Variables
  - ▶ UNIX - .profile or .kshrc or .cshrc, they are typically incorporate with db2profile (Bourne or Korn shell) or db2cshrc (C shell) found in the instance owner's home directory
- Examples:
  - ▶ Windows - set DB2INSTANCE=PROD
  - ▶ UNIX - export DB2INSTNCE=PROD

# DB2 Environment

## Setting DB2 Variable Values



# DB2 Configuration Parameters

---

- Get/Set/Reset the Database Manager Configuration
  - ▶ GET DBM CFG [SHOW DETAIL]
    - show detail displays current and delayed values
  - ▶ UPDATE DBM CFG USING <param> <value>
  - ▶ RESET DBM CFG
- Get/Set/Reset the Database Configuration
  - ▶ GET DB CFG FOR <db> [SHOW DETAIL]
    - show detail displays current and delayed values
  - ▶ UPDATE DB CFG FOR <db> USING <param> <value>
  - ▶ RESET DB CFG FOR <db>
- DB2 Control Center can be used to display, update, and reset the DBM and DB configuration parameters

# Display DBM Configuration Parameters with DB2 CC

CLARALIU - DB2

Select the value field of a parameter to change its value.

Keyword	Value	Pending Value	Pending Val
<b>Applications</b>			
AGENTPRI	Let system dete...		
FENCED_POOL	MAX_COORDA...		
INITFENCED_JVM	No		
KEEPFENCED	Yes		
<b>MAX_CONNECTIONS</b>	<b>400</b>	<b>MAX_COORDA...</b>	<b>400</b>
MAX_COORDAGENTS	400	MAXAGENTS	
MAX_LOGICAGENTS	400	MAX_COORDA...	
MAXAGENTS	401	400	
MAXCAGENTS	400	MAX_COORDA...	
NUM_INITAGENTS	0		

91 of 91 items displayed

Hint  
Maximum number of client connections allowed per database partition. The concentrator feature is not activated unless this value is greater than max\_coordagents.  
Range [-1; 1 -- 64000] Counter

OK Cancel Help

## Chapter 2: Getting Started with DB2 UDB

DB2 UDB Family Products

DB2 UDB V8 Installation

DB2 UDB Instances

DB2 UDB Environment

**DB2 UDB Tools**



# DB2 Command Line Tools

---

- DB2 Command Line Window (Windows Only)
  - ▶ click on the **DB2 Command Window** icon or from MS-DOS prompt, enter **db2cmd**
  - ▶ invoke the interpreter by prefacing commands and SQL with '**db2**'
    - e.g. **db2 connect to sample**
    - e.g. **db2 "select \* from employee"**
    - e.g. **db2 -tvf createtab.db2**
  - ▶ to end command line mode and terminate the DB2 backend process (db2bp), enter **db2 terminate**
  - ▶ all OS commands can be issued from the DB2 Command Window
- DB2 Command Line Processor (CLP)
  - ▶ click on the **DB2 Command Line Processor** icon or enter **db2** at a command prompt
  - ▶ an interactive input prompt appears:
    - **db2 =>**
  - ▶ no need to prefix commands with '**db2**'
    - e.g. db2 => **connect to sample**
  - ▶ to end the interactive mode, enter **quit**
  - ▶ to disconnect from the database and terminate the DB2 backend process (db2bp), enter **terminate**
  - ▶ to execute OS commands, enter **!**<OS command>****

# Command Line Options

- to list default command options

- ▶ **LIST COMMAND OPTIONS**

```
No. of retries to connect to backend      (DB2BQTRY) = 60
Request queue wait time (seconds)        (DB2RQTIME) = 5
Input queue wait time (seconds)          (DB2IQTIME) = 5
Command options                           (DB2OPTIONS) =
```

Option	Description	Current Setting
-a	Display SQLCA	OFF
-c	Auto-Commit	ON
-e	Display SQLCODE/SQLSTATE	OFF
-f	Read from input file	OFF
-l	Log commands in history file	OFF
-n	Remove new line character	OFF
-o	Display output	ON
-p	Display interactive input prompt	ON
-r	Save output to report file	OFF
-s	Stop execution on command error	OFF
-t	Set statement termination character	OFF
-v	Echo current command	OFF
-w	Display FETCH/SELECT warning messages	ON
-x	Suppress printing of column headings	OFF
-z	Save all output to output file	OFF

- To change default command options
  - ▶ e.g. turn auto-commit off: **set db2options=+c**
- To change command option for the current session
  - ▶ e.g. to save output to file:
    - **UPDATE COMMAND OPTIONS USING z ON output.txt**

# Getting Help

---

- Obtain syntax and information for DB2 commands from the command line

- ▶ `db2 ?` list of all DB2 commands
- ▶ `db2 ? <db2-command>` get syntax help for a specific command
- ▶ `db2 ? sqlnnnn` get message and brief description of a specific SQLCODE
- ▶ `db2 ? db2nnnn` get message and brief description of a DB2 error code

- For example:

`db2 ? catalog tcpip`

```
CATALOG [ADMIN] TCPIP NODE node-name REMOTE hostname  
[SERVER service-name] [SECURITY {SOCKS}]  
[REMOTE_INSTANCE instance-name] [SYSTEM system-name]  
[OSTYPE os-type] [WITH "comment string"]
```

# DB2 GUI Tools

---

- Control Center
  - ▶ Central point of administration
- Command Center
  - ▶ GUI wrapper for command line processor (CLP)
- Journal
  - ▶ Central point for logging DB2 Activities
- License Center
  - ▶ Central point of DB2 license management
- Development Center
  - ▶ Central point for developing:
    - SQL & Java Stored Procedures
    - SQL & Java User Defined
- Task Center
  - ▶ Central point for scheduling database jobs
- Health Center
  - ▶ Central point for DB2 Health Monitoring
  - ▶ Memory Visualizer
- Configuration Assistant
  - ▶ Tool to configure the client
  - ▶ A light-weight version of the Control Center
- Replication Center
  - ▶ A GUI tool to set up and administer a replication environment and to run the Capture and Apply programs





Command Center Interactive Edit Tools Help

Command type

SQL statements and DB2 CLP commands

MVS system commands

System

Interactive | Script | Query Resu

Database connection

CLARALIU - DB2 - SAMPLE

Command history

```
select * from employee
```

Command

```
select * from employee
```

connect to sample ;

-----

```
connect to sample
```

Database Connection

Database server

SQL authorization ID

Local database alias

Save as

System name CLARALIU

Path

Current directory C:\

Files

- AUTOEXEC.BAT
- boot.ini
- BOOTSECT.DOS
- COMLOG.txt
- CONFIG.SYS
- CWUtilInst.log

Directories

- \$user
- ADOBEAPP
- DB2
- Documents and Settings
- DRIVERS
- evmon

Drives

C: 759 MB available

Save to the Task Center

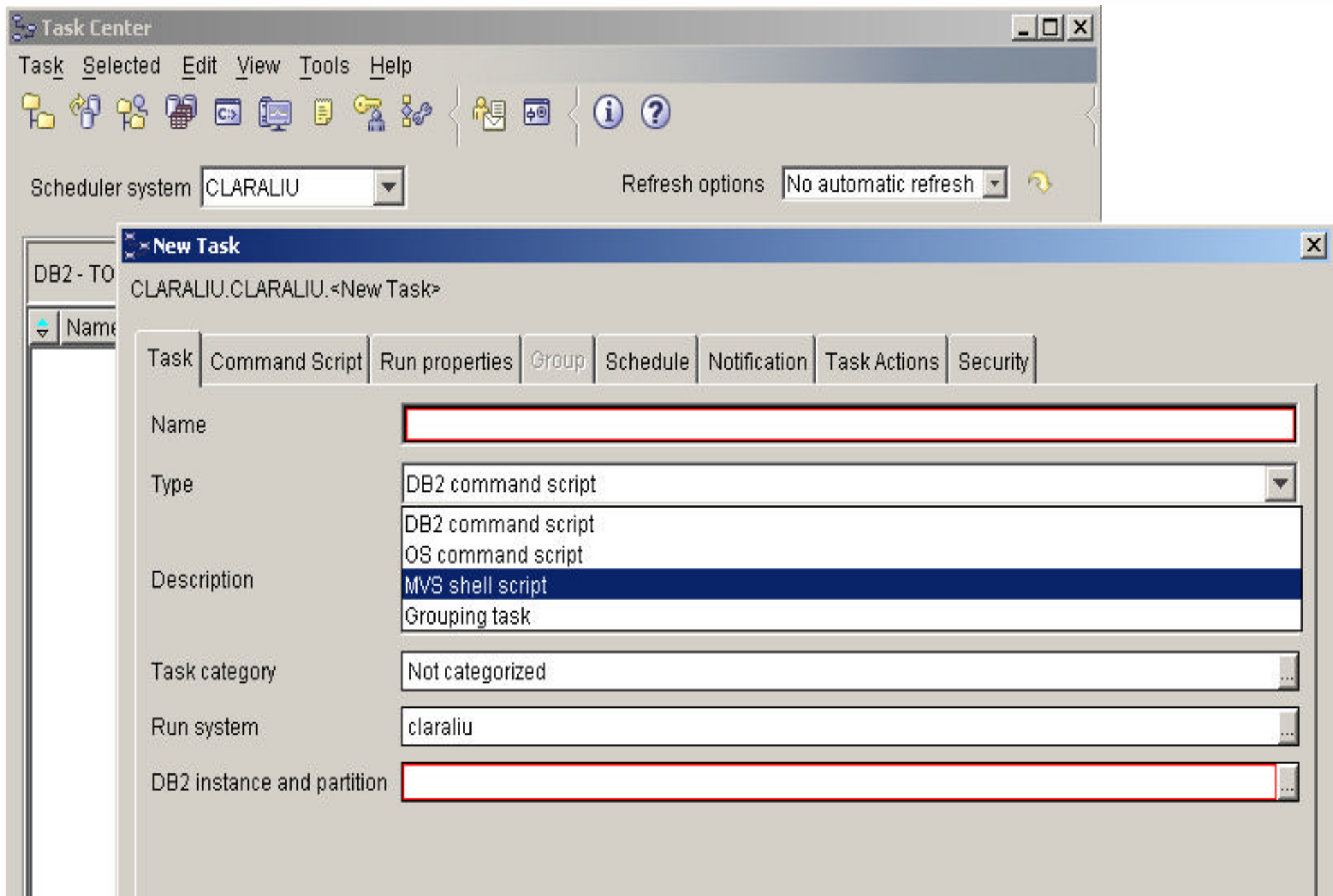
Name

Instance DB2

Script description

Working directory

# Task Center



# Task Center

CLARALIU.CLARALIU.<New Task>

Task | Command Script | Run properties | **Group** | Schedule | Notification | Task Actions | Security

Task action

Specify the condition on which to run the [task action](#)

Task success  
 Task failure  
 Any condition

Task action: Run task

Task name: Run task, Enable schedule of, Disable schedule of, Delete this task

Add >  
Change >  
Remove

List of task actions

Condition	Task Action	Task Names
-----------	-------------	------------

Enable task actions

Retry

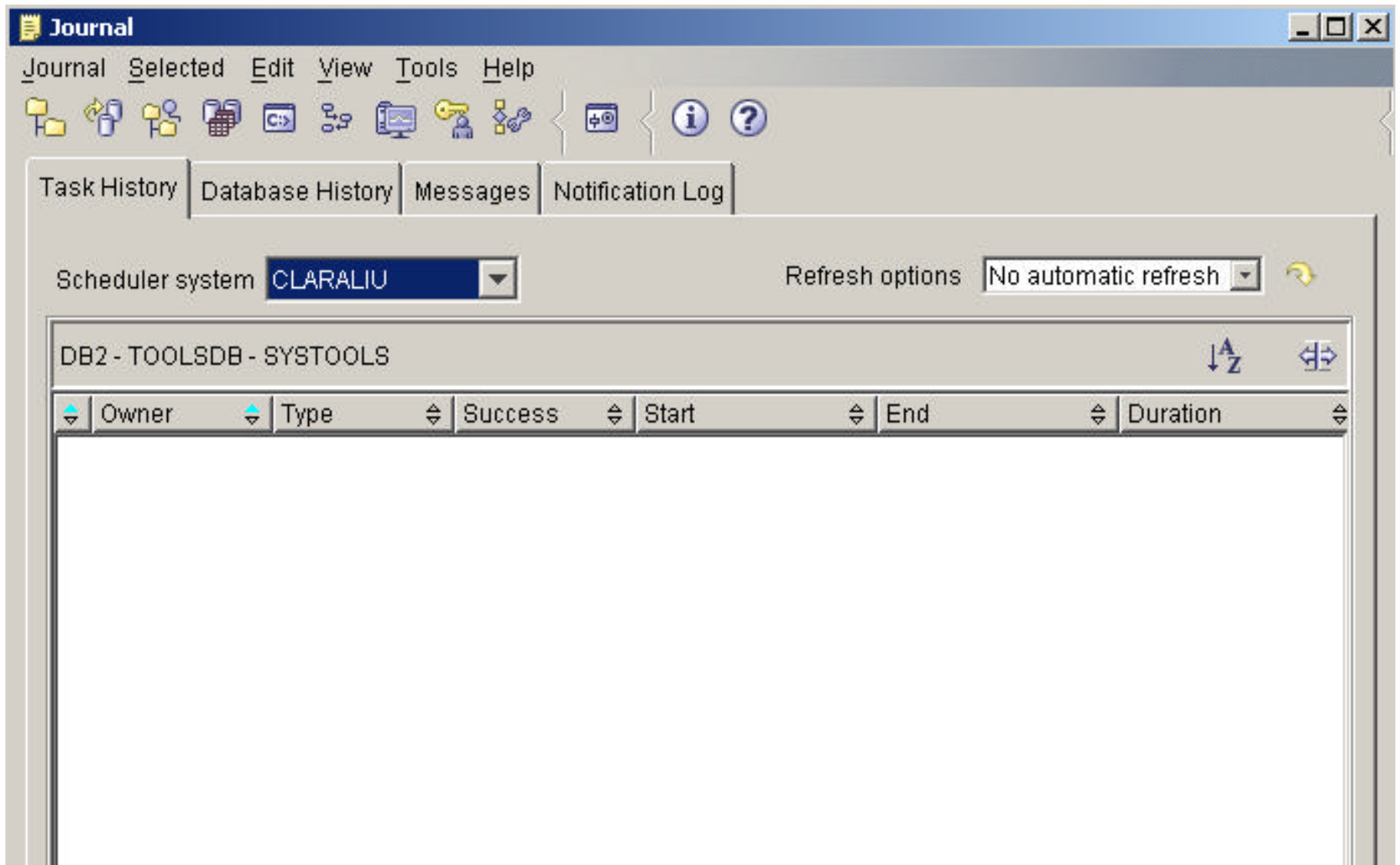
Specify the number of times a failing task should be retried before running the task actions

Count: 0 Interval: 00:30

OK Cancel Help



# Journal



# DB2 Administration Server (DAS)

---

- A background process to support instance administration
  - ▶ **db2as** on UNIX (default)
  - ▶ **DB2DAS** service on Windows (default)
- Provides support services for DB2 tools such as the Control Center, Configuration Assistant, Replication Center, and Development Center
- Only one DAS per server machine
- Need correct authorization to create a service, e.g. root authority in UNIX
- Some DAS commands:
  - ▶ **db2admin create**
  - ▶ **db2admin** ( to obtain the name of the DAS on the machine )
  - ▶ **db2admin start**
  - ▶ **db2admin stop**
  - ▶ **db2 get admin cfg**
  - ▶ **db2 update admin cfg using <parm> <value>**

# Tools Catalog Database

- The DB2 Tools Catalog must be created to enable "scheduling" and automation of tasks
- Can be created ...
  - ▶ as an independent database
  - ▶ within an existing database
- Can be shared by...
  - ▶ the local database
  - ▶ all databases in an organization
- Requirements:
  - ▶ 32K pagesize tablespaces
  - ▶ two 32K pagesize tablespaces are created by default, REGULAR and SYSTEM TEMPORARY tablespaces

